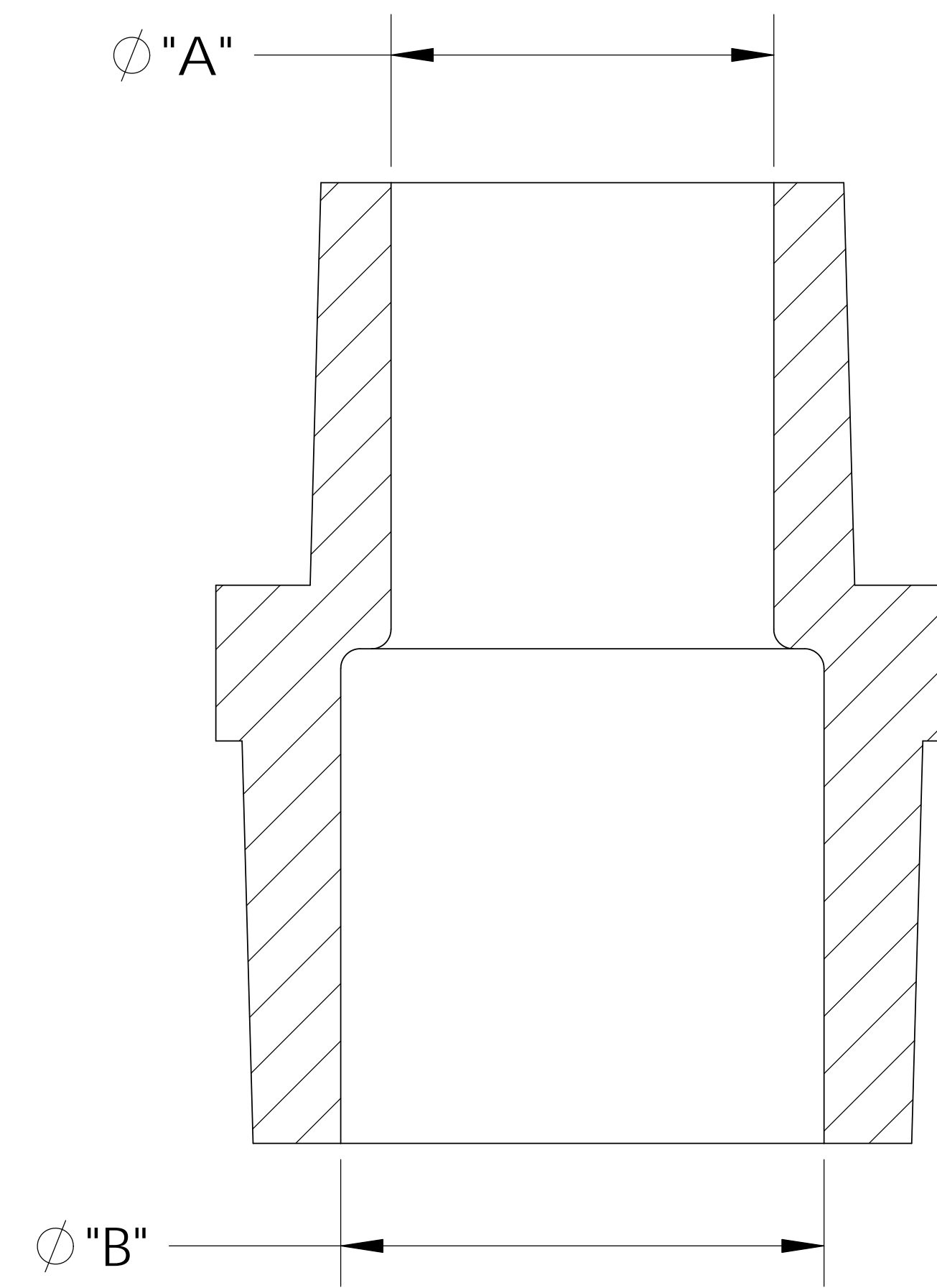
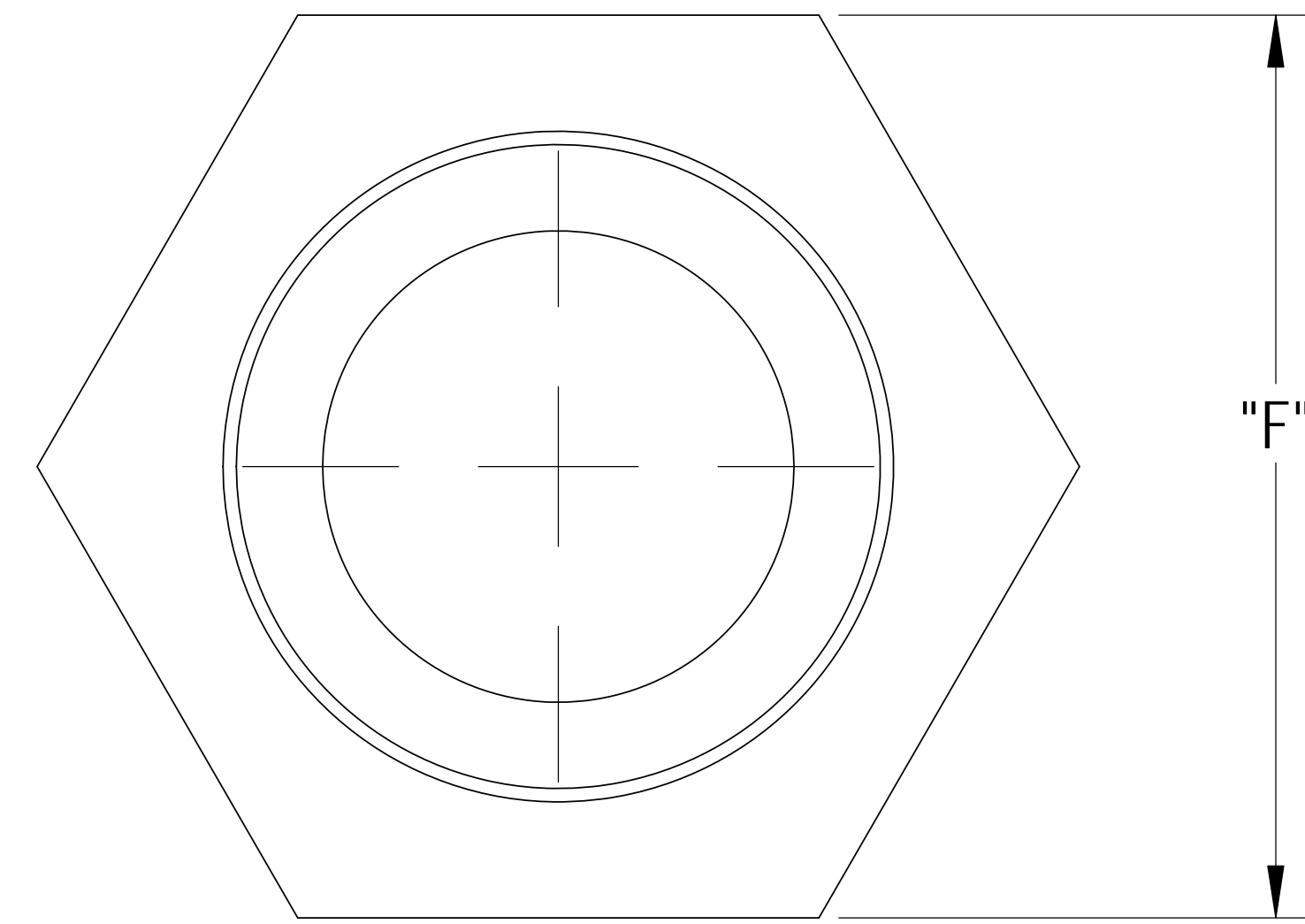
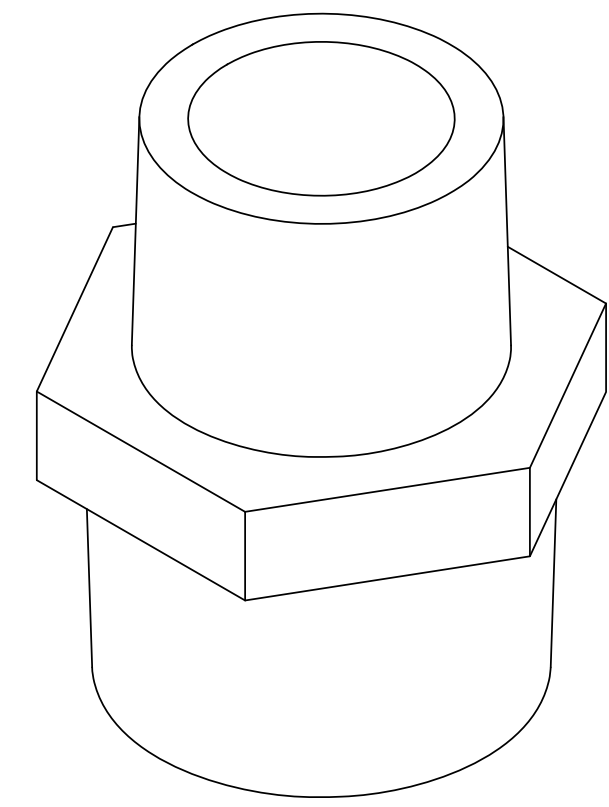
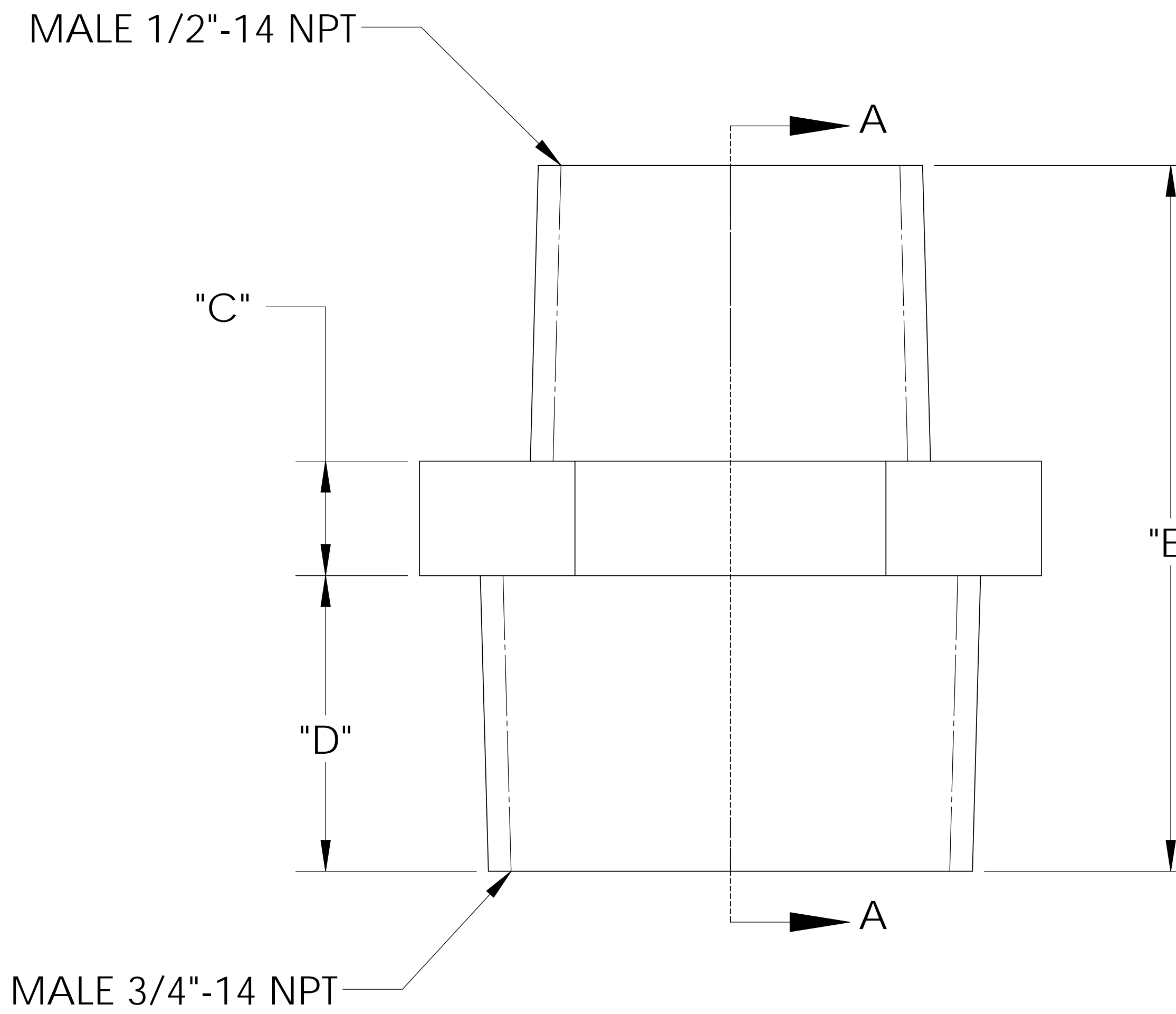


UNCONTROLLED IF PRINTED; CONTROLLED DOCUMENT LOCATED IN IQMS DOCUMENT CONTROL



SECTION A-A



CATALOG NO.	DESCRIPTION	MATERIAL	DIM "A"	DIM "B"	DIM "C"	DIM "D"	DIM "E"	DIM "F"
TRN60128/PP	3/4" X 1/2" PP	POLYPROPYLENE	.580	.735	.240	.61	1.46	1.11
TRN60128/P	3/4" X 1/2" P	POLYETHYLENE	.575	.710	.245	.59	1.39	1.10
TRN60128/N	3/4" X 1/2" N	NYLON	.590	.745	.240	.62	1.48	1.13

SHOWN

REV	WRO#	DESCRIPTION
C	95.00126	CONVERTED TO 3D FORMAT
HISTORY		

UNLESS OTHERWISE SPECIFIED:  
 DIMENSIONS ARE IN INCHES  
 TOLERANCES:  
 ANGULAR: ±0.5°  
 XX = ± 0.1  
 X.XX = ± 0.05  
 X.XXX = ± 0.015  
 REMOVE ALL SHARP EDGES AND BURRS  
 BLEND ALL RADII TO 0.01IN  
 INTERPRET GEOMETRIC TOLERANCING PER: ANSI Y 14.5 1994  
 MATERIAL: PP, P, N  
 FINISH: NA  
 THIRD ANGLE PROJECTION:

NAME	DATE
DRAWN KDJ	12/30/10
CHECKED KDJ	12/30/10
ENG APPR.	XX/XX/XX
MFG APPR.	XX/XX/XX
Q.A.	XX/XX/XX

**Thogus** You think it, we can make it...  
 33490 PIN OAK, AVON LAKE, OH 44012

TITLE: **3/4" NPT X 1/2" NPT REDUCER NIPPLE**

SIZE **B** DWG. NO. **TRN60128** REV **C**

DO NOT SCALE DRAWING SCALE: 2:1 MASS: SHEET 1 OF 1

- NOTES:  
 1) POLYPROPYLENE HAS COLOR OPTIONS:  
 BLACK = TRN60128/PPB  
 NATURAL = TRN60128/PPN

**PROPRIETARY AND CONFIDENTIAL**  
 THE INFORMATION CONTAINED IN THIS DRAWING IS THE SOLE PROPERTY OF THOGUS PRODUCTS COMPANY. ANY REPRODUCTION IN PART OR AS A WHOLE WITHOUT THE WRITTEN PERMISSION OF THOGUS PRODUCTS COMPANY IS PROHIBITED.